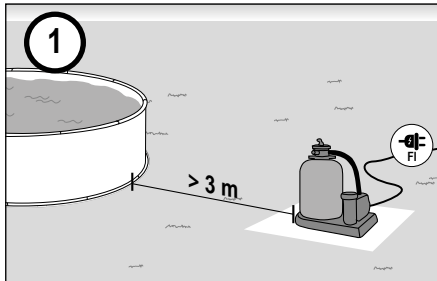


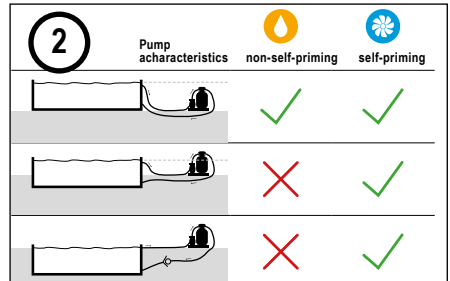
Assembly and Operating Instructions



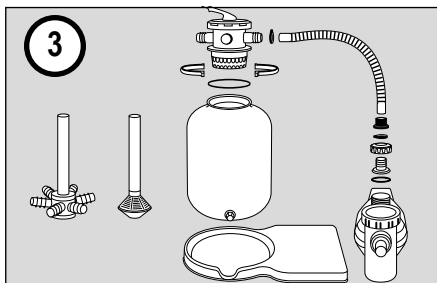
KURZANLEITUNG / QUICK START GUIDE / NOTICE SOMMAIRE / GUIDA RAPIDA STRUČNÁ PŘÍRUČKAG / STRUČNÝ NÁVOD / KRATKA NAVODILAG / GYORS ÚTMUTATÓ



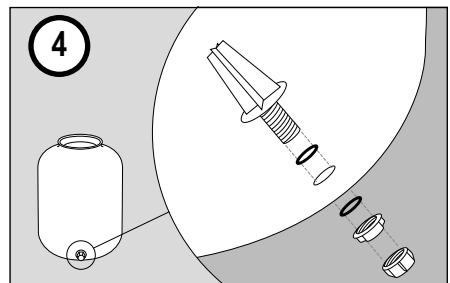
- (D)** Standort der Filteranlage wählen
- (UK)** Selecting the filter system location
- (F)** Sélection du lieu d'implantation de l'installation de filtrage
- (I)** Scegliere la collocazione del filtro
- (NL)** Positie van de filterinstallatie kiezen
- (S)** Välj var filtret ska stå
- (CZ)** Zvolte umístění filtračního systému
- (SK)** Zvoľte miesto filtračného zariadenia
- (SI)** Izbira mesta postavitve filtrirne naprave
- (HU)** A szűrőberendezés felállítási helyének megválasztása
- (RO)** Selectarea locului de amplasare al instalației de filtrare



- (D)** Position der Filteranlage wählen
- (UK)** Selecting the filter system position
- (F)** Sélection de la position de l'installation de filtrage
- (I)** Scegliere la posizione del filtro
- (NL)** Positie van de filterinstallatie kiezen
- (S)** Välj hur filtret ska stå
- (CZ)** Zvolte pozici filtračního systému
- (SK)** Zvoľte polohu filtračného zariadenia
- (SI)** Izbira položaja filtrirne naprave
- (HU)** A szűrőberendezés helyzetének megválasztása
- (RO)** Selectarea poziției instalației de filtrare

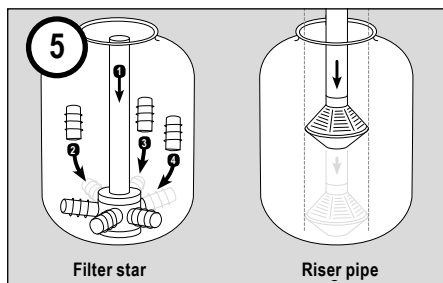


- (D)** Filteranlage montieren
- (UK)** Installing the filter system
- (F)** Montage de l'installation de filtrage
- (I)** Montare il filtro
- (NL)** Filterinstallatie monteren
- (S)** Montera filteranläggningen
- (CZ)** Smontujte filtrační systém
- (SK)** Namontujte filtračné zariadenie
- (SI)** Montaža filtrirne naprave
- (HU)** A szűrőberendezés összeszerelése
- (RO)** Montarea instalației de filtrare

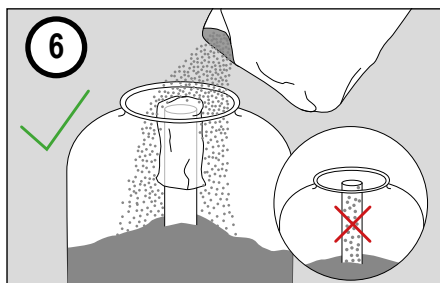


- (D)** Entleerungsventil festschrauben
- (UK)** Fixing the drain valve
- (F)** Fixation de la vanne de vidange
- (I)** Avvitare la valvola di scarico
- (NL)** Aftapventiel vastschroeven
- (S)** Skruva fast tömningsventilen
- (CZ)** Přišroubujte výpustný ventil
- (SK)** Priskrutkujte výpustný ventil
- (SI)** Privijte ventila za izpraznitev
- (HU)** Az ürítőszelep rögzítése
- (RO)** Înșurubare fermă supapă de golire

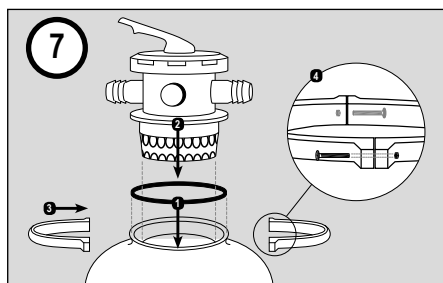
BEKNOPTE HANDLEIDING / KORTFATTAD BRUKSANVISNING / MANUAL CU INSTRUCȚIUNI PE SCURT



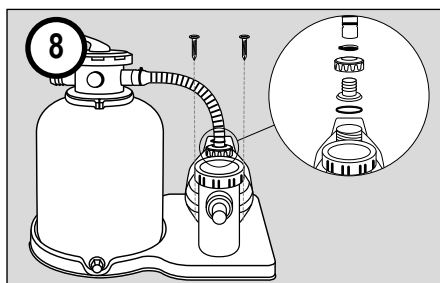
- Ⓓ Steigrohr einsetzen
- ⓊK Inserting the riser pipe
- Ⓕ Insertion du tube ascendant
- Ⓘ Inserire il tubo montante
- ⓃL Stijgleiding plaatsen
- Ⓐ Sätt i stigröret
- ⒸZ Nasadte stoupací trubku
- ⒶSK Nasadte stúpaciu rúru
- ⒶSI Vstavljanje dvizne cevi
- ⒶHU A felszállósó behelyezése
- ⒶRO Aplicare țeavă ascendentă



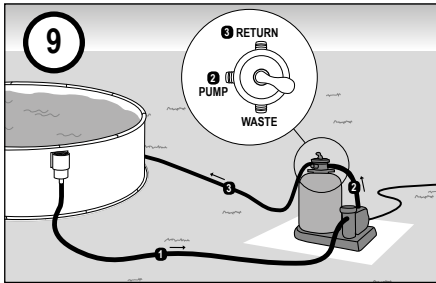
- Ⓓ Filtermaterial einfüllen
- ⓊK Filling the filter material in
- Ⓕ Remplissage de la matière filtrante
- Ⓘ Caricare il materiale filtrante
- ⓃL Filtermateriaal bijvullen
- Ⓐ S Häll i filtermediet
- ⒸZ Napiňte filtrační materiál
- ⒶSK Napiňte filtračný materiál
- ⒶSI Polnjenje s filtrirnim materialom
- ⒶHU A szűrőanyag betöltése
- ⒶRO Umplere cu material de filtrare



- Ⓓ Ventil aufsetzen
- ⓊK Valve installation
- Ⓕ Mise en place de la vanne à 6 voies
- Ⓘ Applicare la valvola
- ⓃL Ventiel plaatsen
- Ⓐ S Sätt på ventilen
- ⒸZ Nasadte ventil
- ⒶSK Nasadte ventil
- ⒶSI Namestitev ventila
- ⒶHU A szelep felhelyezése
- ⒶRO Amplasare supapă



- Ⓓ Montage & Anschluß der Pumpe
- ⓊK Assembly and connection of the pump
- Ⓕ Montage et raccordement de la pompe
- Ⓘ Montaggio e collegamento della pompa
- ⓃL Montage & aansluiting van de pomp
- Ⓐ S Montering och tillkopplingen av pumpen
- ⒸZ Namontujte a připojte čerpadlo
- ⒶSK Montáž & Pripojenie čerpadla
- ⒶSI Montaža in priklop črpalke
- ⒶHU A szivattyú szerelése és csatlakoztatása
- ⒶRO Montarea și racordarea pompei



- D** Anschluß an den Pool
- UK** Connection to pool
- F** Raccordement au bassin
- I** Collegamento alla piscina
- NL** Aansluiting op de pool
- S** Koppla den till poolen
- CZ** Připojení k bazénu
- SK** Pripojenie na bazén
- SI** Priklop na bazen
- HU** Csatlakoztatás a medencénél
- RO** Racordare la bazin

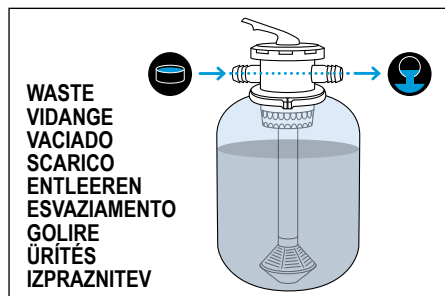
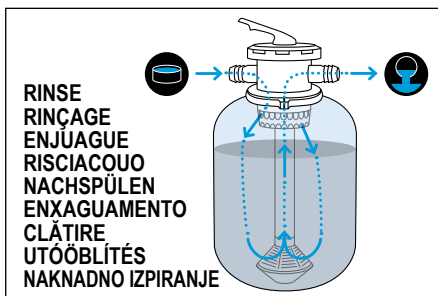
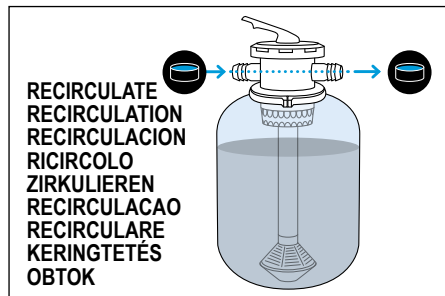
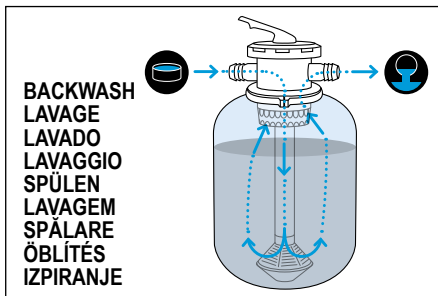
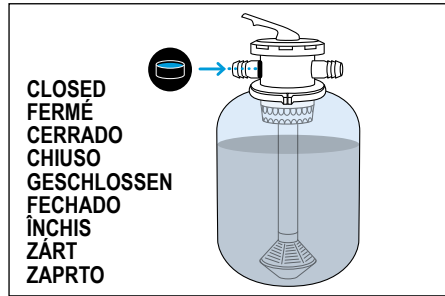
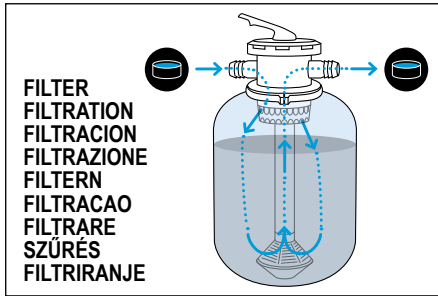


Please observe the detailed instructions on the following pages.

- D** Eine ausführliche Anleitung in Ihrer Sprache steht im Internet unter <http://download.waterman-pool.com> für Sie bereit.
- F** Une notice d'utilisation détaillée dans votre langue est disponible sur le site Internet <http://download.waterman-pool.com>
- I** Potete trovare la descrizione dettagliata nella vostra lingua in Internet all'indirizzo <http://download.waterman-pool.com>
- NL** Een uitgebreide handleiding in uw taal staat op internet onder <http://download.waterman-pool.com> voor u klaar.
- S** En utförlig anvisning på ditt språk finns att ladda ner på Internet under adressen <http://download.waterman-pool.com>
- CZ** Podrobné pokyny ve vašem jazyce jsou k dispozici na internetu jsou pro vás připraveny pod <http://download.waterman-pool.com>
- SK** Podrobný návod vo vašom jazyku nájdete na internete na stránke <http://download.waterman-pool.com>
- SI** Celotna navodila v Vašem jeziku najdete na spletni strani <http://download.waterman-pool.com>
- HU** Részletes útmutató az Ön beszélt nyelvén az interneten a következő címen <http://download.waterman-pool.com> áll rendelkezésére.
- RO** Un manual cu instrucțiuni detaliate vă stă la dispoziție pe internet pregătit în limba dumneavoastră la <http://download.waterman-pool.com>



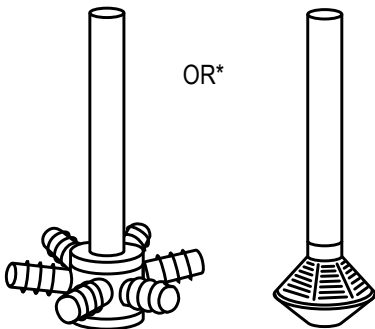
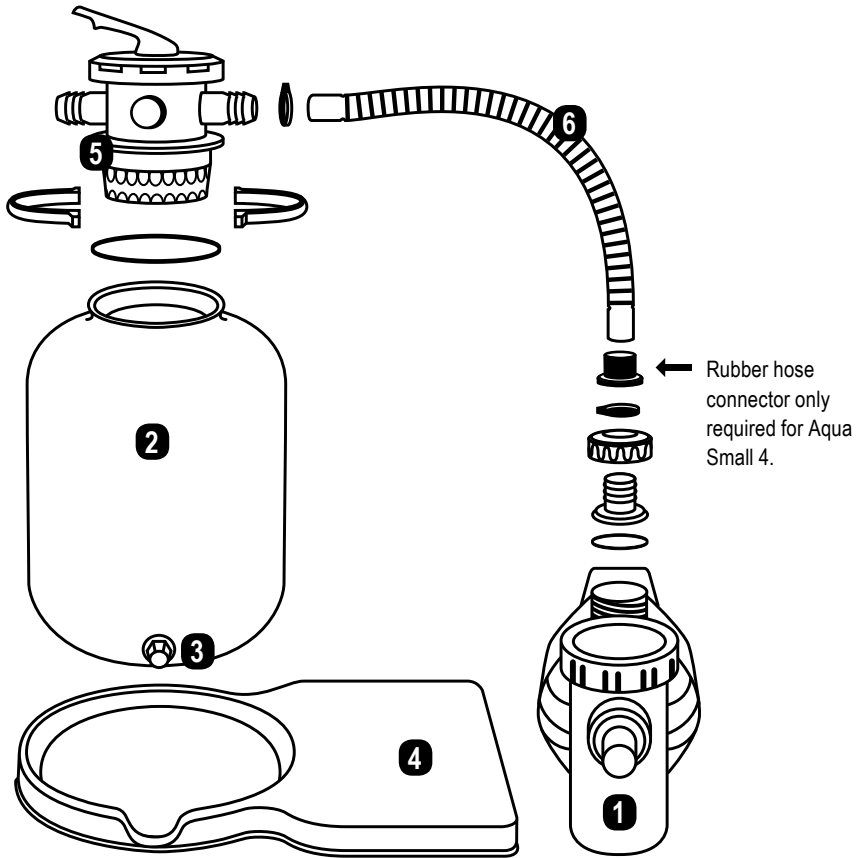
- Ⓓ Beschreibung des 6-Wege-Ventils
- Ⓚ Description of the 6-way valve
- Ⓕ Description de la vanne à 6 voies
- Ⓘ Descrizione della valvola a 6 vie
- Ⓝ Beschrijving van het 6-weg ventiel
- Ⓢ Beskrivning av 6-vägsventilen
- Ⓒ Popis 6-cestného ventilu
- Ⓚ Popis 6-cestného ventilu
- Ⓛ Opis 6-potnega ventila
- Ⓗ A 6 utú szelep leírása
- Ⓡ Descrierea supapei cu 6 căi



PARTS LIST

Filter pump non-self-priming ●
Filter pump self priming ●

No.	Article no.	Description	502010476	2260001	2260001CH	2260011	502010477	502010478	2260002	2260002CH	2260007	2260007CH	22260017	2260025	502010479	2260012	22260016	2260021	2260650	CP2503	CP2504	CP3006	2260002HB	2260002HBCH	2260002HBN	2260002HBNC		
1	2260130	Filter pump Aqua Mini 3	●	X		X															X							
1	2260140	Filter pump Aqua Small 4	●																									
1	2260140CH	Filter pump Aqua Small CH	●																									
1	2260131	Filter pump Aqua Splash 4	●		X		X	X													X							
1	2260131CH	Filter pump Aqua Splash 4 CH	●			X																						
1	45991150	Filter pump Aqua Plus 4	●									X	X			X												
1	2260135	Filter pump Aqua Splash 6 II	●													X							X					
1	2260135CH	Filter pump Aqua Splash 6 II CH	●																					X				
1	2260142	Filter pump Aqua Small 6	●																						X			
1	2260142CH	Filter pump Aqua Small 6 CH	●																							X		
1	2260132	Filter pump Aqua Plus 6	●						X	X				X	X							X					X	
1	2260132CH	Filter pump Aqua Plus 6 CH	●							X	X																	
1	2260133	Filter pump Aqua Plus 8	●																									
1	2260133CH	Filter pump Aqua Plus 8 CH	●																									
1	2260134	Filter pump Aqua Plus 11	●																									
1	2260134CH	Filter pump Aqua Plus 11 CH	●																									
1	2260147	Filter pump Aqua Vario	●																									
1	2260147CH	Filter pump Aqua Vario CH	●																									
2	2260101	Filter tank Ø 250mm grey			X	X	X	X	X																			
2	2260106	Filter tank Ø 250mm grey		X																								
2	2260102	Filter tank Ø 300mm grey						X	X	X	X	X	X	X	X													
2	2260105	Filter tank Ø 300mm blue														X	X	X	X	X	X	X	X					
2	2260150	Filter tank Ø 330mm grey																					X	X	X	X		
2	2260203	Filter tank Ø 396mm grey																										
2	2260103	Filter tank Ø 400mm grey																										
2	2260108	Filter tank Ø 400mm blue																										
2	2260104	Filter tank Ø 500mm grey																										
2	2260109	Filter tank Ø 500mm blue																										
3	590000014	Drain valve		X	X	X	X	X	X	X	X	X	X	X	X	X	X	X	X	X	X	X	X	X	X	X	X	X
4	2260113	Filter pallet 500x675 mm																										
4	2260114	Filter pallet 500x675 mm																										
4	2260115	Filter pallet 545x325 mm		X	X	X	X	X	X	X	X	X	X	X	X	X	X	X	X	X	X	X	X	X	X	X	X	X
4	2260116	Filter pallet 738x500 mm																										
4	2260117	Filter pallet 660x660 mm																										
5	2260096	6-way valve with clamping ring																					X	X	X	X	X	
5	2260100N	6-way valve with clamping ring+seal		X	X	X	X	X	X	X			X	X	X	X	X	X	X	X	X	X	X	X	X	X	X	
5	2260099	6-way valve for piping								X	X				X	X												
6	2260120	Hose Ø 38mm, length 0.33m		X	X	X	X	X	X	X			X	X	X	X	X	X	X	X	X	X	X	X	X	X	X	
6	2260121	Hose Ø 38mm, length 0.37m																										
6	2260122	Hose Ø 38mm, length 0.38m																	X	X								
6	2260143	Hose Ø 38mm, length 0.52m																										
6	2260144	Hose Ø 38mm, length 0.66m																										
	2600020	Pressure gauge				X																						
	592260110	Accessory bag SF 128		X	X		X	X								X						X		X	X			
	592260111	Accessory bag SF 133 + SF 142						X	X	X	X	X	X	X	X	X	X	X	X	X	X		X					
	592260112	Accessory bag SF 152																										
	592260113	Accessory bag SF 122 + SF 124		X		X															X					X	X	
	592260113BIL	Accessory bag SF 124 Biltema																										
	Sand quantity	approx. 10 - 15 kg		X	X	X	X	X	X																			
		approx. 20 - 25 kg							X	X	X	X	X	X	X	X	X	X	X	X	X	X	X	X	X	X	X	
		approx. 50 kg																										
		approx. 75 kg																										



Rise pipe model 1

Rise pipe model 2

* Each delivery includes only one riser pipe model.



Important instructions

- **The use of filter systems for swimming pools and their protected areas is only permitted if they are designed and constructed in accordance with VDE 0100-49D. It is mandatory to protect the power connection via an residual leakage circuit breaker.**
- **In order to maintain the required protected area (removal of electronic equipment from water), the filter system must be positioned outside the water with a minimum distance of 3 m. (Protected area 2 according to VDE 0100-702.)**
- **Further safety instructions can be found in the enclosed operating instructions for the pump. These must be observed! (The CE label is also included).**

To avoid damage:

- The pump must never run dry (the pre-filter must be filled with water prior to commissioning). The connection to the pool skimmer and to the inlet nozzle must be installed prior to commissioning.
- Actuate the 6-way valve only when the pump is switched off!
- Filter systems with non-self-priming pump must be installed below the water level. Alternatively, if self-priming pumps are to be mounted above the water level, it is imperative to install a non-return valve on the suction side.

TABLE OF CONTENTS

1. Filter system – Description

- 1.1 Description of 6-way valve
- 1.2 Description of circulation pump
- 1.3 Description of filter tank

2. Commissioning

- 2.1 Assembly Instructions - Assembly
- 2.2 Filling the silica sand filter
- 2.3 Filling water in - Commissioning
- 2.4 Flushing the silica sand
- 2.5 Cleaning the pre-filter
- 2.6 Filter operation
- 2.7 Setting the filtration time
- 2.8 Connection of sand filter system

3. Regular backwashing

- 3.1 Backwash
- 3.2 Rinse

4. Maintenance works

- 4.1 Maintenance of filter tank
- 4.2 Maintenance of circulation pump
- 4.3 General maintenance

5. Taking out of operation

6. Troubleshooting

- 6.1 Pump not priming
- 6.2 Performance of circulation pump not sufficient
- 6.3 Circulation pump is too noisy
- 6.4 Circulation pump does not start automatically
- 6.5 Circulation pump leaks
- 6.6 Sand in the pool
- 6.7 Filter pressure is not correct
- 6.8 Water is not clear
- 6.9 Loss of water in basin

7. Water treatment – General Information

- 7.1 pH value
- 7.2 Algae control
- 7.3 Error/fault
- 7.4 Continuous disinfection
- 7.5 Turbidity
- 7.6 Causes of unsatisfactory condition of water

1. FILTER SYSTEM – DESCRIPTION



With this sand filter system, you have purchased a high-quality quality product. We hope you will enjoy your swimming pool and the filter system. We recommend that you read these assembly instructions and the enclosed operating instructions for the pump carefully. Keep them in a safe place

and familiarize yourself with the special features and possible uses of this system. The filter system ensures a mechanical treatment of swimming pool water. However, an impeccable water quality can only be guaranteed if the water is treated chemically in addition (see information on reverse side).

1.1 DESCRIPTION OF 6-WAY VALVE

The individual functions/positions of the plastic valve are clearly marked on the upper side so that there is no risk of confusion. **Please also observe the drawings and explanations in our Quick Start Guide on page 5.**



1.1.1 FILTER:

Filter (operating state)

In this position, the swimming pool water is pumped through the filter tank and silica sand and then back to the pool. The dirt is filtered out via the silica sand.

1.1.4 RECIRCULATE:

Circulate without filtration (increased circulation)

In this position, the swimming pool water flows right onto the swimming pool, the filter tank is bypassed. This setting is used after adding pool chemicals (e.g. after a shock chlorination).

1.1.2 CLOSED:

Servicing

All functions are disabled in this position. The circulation pump must not be switched on. This position is used when maintenance works are carried out in the filter tank.

1.1.5 RINSE:

Filtration into the drains

In this position, the lines of the filter system are cleaned from residual dirt after backwashing.

1.1.3 BACKWASH:

Cleaning the filter system

In this position, the swimming pool water is pumped through the filter in the opposite direction (from bottom to top) to clean it. The waste water is drained sideways out of the valve (hose outlet = waste).

1.1.6 WASTE:

Emptying/Sewer

In this position, the swimming pool water is pumped directly into the sewer (valve outlet 'Waste').

1.2 DESCRIPTION OF CIRCULATION PUMP

The circulation pump has the task of pumping the water from the swimming pool through the filter tank and back to the swimming pool (see also separate pump manual).

1.2.1 PRE-FILTER (OPTIONAL, NOT AVAILABLE WITH PUMPS 2260130,2260140,2260140CH)

The pre-filter, which is installed on the suction side, protects the pump against coarse dirt (e.g. hair, leaves, stones). We recommend to install a gate valve (not included in delivery) between the skimmer and the filter pump to prevent major water losses in your swimming pool, especially when cleaning the pre-filter. The pre-filter must be regularly cleaned (every 1-2 weeks).

1.2.2 SHAFT SEAL

The pump is equipped with a mechanical shaft seal between the pump housing and the motor to seal the motor shaft. This seal is a wearing part/no warranty (see pump 4.2.3).

1.3 DESCRIPTION OF FILTER TANK

The filter tank is used to mechanically remove suspended particles such as hair, skin flakes, pollen and other impurities from the swimming pool water by means of a special silica sand for swimming pools (0.4 - 0.8 mm or other filter medium, e.g. filter glass or filter balls). This is done at a pressure of 0.4 - 0.8 bar. When the pressure increases (loud pumping noise) the filter must be backwashed (see section 2.4). This is by no means a defect of the pump, it is a normal process, as the pump has to

work against a higher resistance if the filter tank/ filter sand is too dirty. To measure the filter pressure in the tank, there is an optionally (additional) pressure gauge (item no.: 2600020) available (not included in delivery), which is fixed at the top of the valve (bleeder screw). The pressure gauge allows you to read the filter pressure at any time and thus determine whether a backwashing is required.



2. INSTALLATION OF SAND FILTER SYSTEM

Step 1:

The following tools are required for this: Phillips screwdriver, Teflon tape, 7 mm wrench, possibly drill, possibly cordless screwdriver, rubber hammer.



Step 2:

Screw the drain valve into the lower hole of the filter tank and close it with the valve cap.



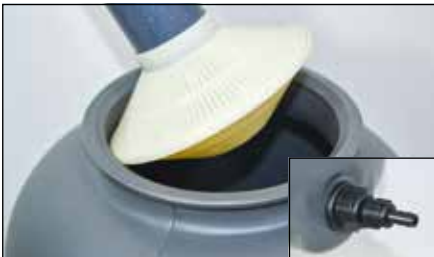
Step 3: (Instructions for model with riser pipe 1)

At first, screw only 2 of the filter cartridges into the riser pipe.



Step 4: (Instructions for model with riser pipe 2)

The other filter cartridges are inserted in the tank, as otherwise the assembled riser pipe would not fit through the tank opening.



Step 5:

If you use our alternative tank with fixed (glued) filter basket, it is simply inserted into the filter tank. In this case you also have another drain valve.



Step 6:

Before filling the silica sand in, close the top of the riser pipe with a plastic bag to prevent sand from entering the riser pipe.



Step 7:

Ensure to select the correct silica sand grain size of 0.4 to 0.8 mm for your filter system, as otherwise there may be problems during the filter operation.



Step 8:

Carefully fill in the correct amount of silica sand (see table) from the top into the filter tank, and ensure that the riser pipe remains in the correct position in the middle.



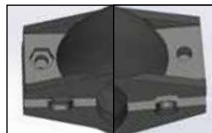
Step 9:

Next place the O-ring on the valve from below.



Step 10:

Ensure that the hexagon nuts are mounted on the correct side of the clamping ring so that they engage in the recess provided for this (see image). Then



screw together alternately so that the pressure is evenly distributed.

**Step 11:**

If necessary, loosen the clamping ring carefully using a rubber hammer to achieve a better sealing and a uniform tensioning of the clamping ring.

**Step 12:**

Insert the rubber hose fitting into the connecting hose and insert in on the upper pump connection (as far as possible). Then fix it firmly with a hose clip.

**Step 13:**

Attach the hose to the middle hose connection (labeled with 'Pump') at the top of the valve.

**Step 14:**

Fix the filter pump on the filter pallet using the self-tapping screws.

**Step 15:**

If the hose connections do not seal well, you can use Teflon tape for additional sealing. To do this, wrap at least 15 times.



Step 16:

The hose is attached to the suction side of the pump, which leads to the swimming pool skimmer.



Step 17:

The return hose to the inlet nozzle is connected to the hose connection 'Return' via the valve.



Step 18:

On the right-hand side of the valve, you can find the hose connection for rinsing (dirty water into the drains). This is labeled with 'Waste'.

2.3 FILLING WATER IN - COMMISSIONING THE FILTER

After the swimming pool has been filled with water up to the skimmer level at least, the filter pump (10) must also be filled with water via the pre-filter (if existing).

2.3.1 SYSTEM BELOW WATER LEVEL

Open the gate valve (not included in delivery) in the pipe from and to the swimming pool (suction and, if necessary, pressure line).

2.3.2 SYSTEM ABOVE WATER LEVEL

For filters mounted above the water level, always use a non-return valve on the suction

side. Fill the pump (10) with water via the pre-filter and retighten the pump cover. Ensure that the gasket inserted in the cover is not damaged or twisted. The pump will only work properly if the gasket closes tightly and no air can be drawn in.

2.3.3 SYSTEM WITH SUSPENSION SKIMMER

Before the suction hose is connected to the skimmer, it must first be completely filled with water.

2.4 RINSING THE SILICA SAND (BEFORE COMMISSIONING)

Set the hand lever of the 6-way valve to the RINSE position, switch the filter system on electrically. In case of very long suction lines, it can take up to 10 minutes until the swimming pool water is pumped. After water starts to be pumped, drain the water into the sewer system for about 1 minute to prevent an abrasion of the silica sand from entering the swimming pool through the inlet nozzle. Then set the valve to "Rinse" for 30 seconds (see also section 3.2).



Warning! Please actuate the 6-way valve (1) only when the filter pump (10) is switched off -

otherwise there is a danger of destroying the 6-way valve!

2.5 CLEANING THE PRE-FILTER

Since it is possible for build-up dirt or foreign bodies to collect in the pump strainer, the dirt strainer must be cleaned after approx. 10-15 minutes after initial start-up.

The circulation pump must not be put into operation without a strainer (coarse filter) as otherwise the pump could become clogged and blocked.

Tip:

Use a gate valve so that no water splashes out when cleaning the pre-filter.

2.6 FILTER OPERATION

Set the hand lever of the 6-way valve (1) to FILTER. The silica sand filter for mechanical water treatment of your swimming pool is now ready for operation. Switch the filter system on.

2.7 SETTING THE FILTRATION TIME

The operating time of the silica sand filter depends on swimming pool size (water volume), bather load, weather and the used chemicals.

Example: It is recommended to recirculate the pool volume 1 to 1.5 times in 24 hours.

If a pool volume of 10 m³ is circulated 1.5 times, a total of 15 m³ must be circulated. If the pump has an output of 6 m³ per hour, the operating time of the filter is approx. 2.5 hours. To achieve an optimal mechanical cleaning, the filter should be running without interruption during this time.

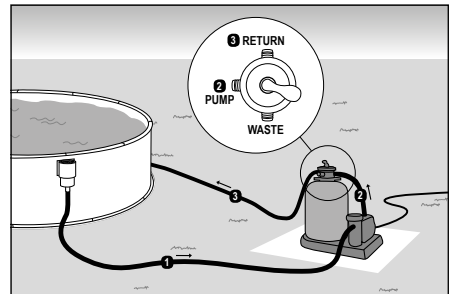
Attention: On hot days, the filter time must be increased to ensure a sufficient disinfection.

(Example: 2 hours in the morning and 2 hours in the afternoon.) The filter system must also be switched on on rainy days, as organic impurities get into the swimming pool via the rainwater, which promotes algae growth!

2.8 CONNECTING THE SAND FILTER SYSTEM TO THE POOL

On the suction side (the connection is made to the filter pump on the pre-filter) a connecting hose is placed to the skimmer of your pool (where the dirty water is drawn in).

The cleaned water is fed back into the pool via a connecting hose between the valve of your filter system (the valve has 3 black hose adapters which are labeled as follows: Return, Waste and Pump) and the hose adapter labeled "Return".



3. REGULAR BACKWASHING

Clean the filter (backwashing) once a week.

To be able to determine when to carry out a filter cleaning (BACKWASHING), we recommend to use a pressure gauge (included as standard only from SF 152 onwards). Systems with pressure gauge allow reading the pressure on the gauge. If the pressure increases by 0.3 bar (max. 0.6 bar), a backwashing must be carried out. A weekly backwashing of the filter is recommended, even if this value is not reached. This ensures that the filter sand remains loose and does not stick together. For filter systems SF 128 to SF 142, you can buy the pressure gauge separately (article no.: 59252960060). Please contact your dealer if required.



Attention: Refill the missing water level in the pool with fresh water after backwashing!

3.1 BACKWASH

Set the 6-way valve (1) to BACKWASH. Switch the filter system on. When the pumped water is clean, the backwashing process is completed, which **should take 3 minutes at the most**. Set the 6-way valve (1) to FILTER or RINSE (first switch the power supply off).

3.2 RINSE

The 6-way valve (1) optionally also allows draining parts of the residual dirt after backwashing into the sewer system instead of the swimming pool.

To do this, set the 6-way valve (1) to RINSE. Switch the filter system on for a maximum of 30 seconds, then reset the 6-way valve (1) to FILTER.

4. MAINTENANCE WORKS

4.1 MAINTENANCE OF FILTER TANK

If the system is installed below the water level, the gate valves must be closed during maintenance works and opened again after completion of these works.

The fill level and condition of the silica sand must be checked once a year. The sand must flow loosely through the hand! If lumps are formed, the silica sand must be replaced completely. See Section 2.2 'Filling'.

4.2 MAINTENANCE OF CIRCULATION PUMP

Switch the pump (10) off, set the 6-way valve (1) to CLOSED. Observe point 1.1.2! Take the filter basket out of the pre-filter and clean it. Do not operate the pump (1) without a strainer. In the winter, empty the pump completely and store it in a frost-free place; turn the motor shaft occasionally to prevent the shaft from becoming encrusted by limescale deposits.

4.2.1 PRE-FILTER

The pre-filter installed in the pump (10) must be cleaned from time to time depending on the degree of contamination.

4.2.2 MOUNTINGS

The two engine mounts are self-lubricating and do not require maintenance.

4.2.3 SHAFT SEAL

The shaft is equipped with a mechanical seal which may leak after prolonged operation. The replacement should be carried out by a specialist.

4.2.5 MOTOR

No special maintenance required.

4.2.6 MAINTENANCE OF 6-WAY VALVE (1)

This valve is maintenance-free. It is important however that the pump is always first switched off before changing the position.

4.3 GENERAL MAINTENANCE

- The swimming pool must be maintained and serviced in accordance with the manufacturer's instructions (see also section 7).
- The skimmer strainer in the surface skimmer must be cleaned regularly at short intervals.
- It is important to ensure that the water level in the pool is always up to the middle of the skimmer at least.

5. TAKING OUT OF OPERATION

- The swimming pool must be winterized in accordance with the relevant instructions of the pool manufacturer.
- The filter system must be winterized if there is a risk of frost. The following must be observed: The water must be drained from the filter tank (4) via the drain screw (5) at the bottom of the filter tank (4).
- The pipes from and to the swimming pool must be emptied completely.
- Switch off the power supply (set to 0), unplug the earthed plug (Schuko).
- Remove the silica sand from the filter tank (4) and store the entire filter system in a frost-protected area (e.g. in the basement). Do not push or transport the filled tank, otherwise there is a risk of breakage.

6. TROUBLESHOOTING

6.1 PUMP DOES NOT DRAW IN WATER AUTOMATICALLY OR THE PRIMING TIME IS VERY LONG

1. Check whether the pre-filter is filled with water at least up to the height of the suction connection.
2. Check the suction line for leaks, as air is drawn in if there are leaks.
3. Check the water level in the pool. If the water level in the skimmer is too low, the pump also draws in air. Increase the water level up to the middle of the skimmer opening.
4. Check whether the skimmer flap can be moved easily and is not jammed. Otherwise, the pump priming is poor or the water column always breaks down. This can cause damage to the pump.
5. Check whether the strainer baskets in the skimmer and the ones in the pump pre-filter are dirty, if necessary clean the strainer baskets.
6. Check whether the cover of the pump pre-filter sits properly on the surface and is firmly screwed.
7. If the suction pipe is very long and laid above the water level, a non-spring loaded check valve must be installed.
8. Check whether the gate valves in the suction and pressure pipes are open.

6.2 PERFORMANCE OF CIRCULATION PUMP NOT SUFFICIENT

1. Filter is dirty; it must be backwashed.
2. Gate valves in the system are not fully open.
3. Dirt strainer in the pump pre-filter and skimmer basket in the skimmer are dirty - cleaning required.
4. The pipe is too long and/or the suction lift is too high.
5. Suction line leaking, pump draws air in.

6.3 CIRCULATION PUMP IS TOO NOISY

1. Filter is dirty; it must be backwashed.
2. Remove foreign particles from the pump, unscrew pump housing, clean housing and impeller.
3. Motor bearings are too noisy, replace the entire motor complete with impeller.
4. The pump is standing on bare wood or concrete floor, resulting in a sound transmission to the building (structure-borne sound). Place the pump on a noise-damping insulating base (rubber, cork, etc.).

6.4 CIRCULATION PUMP DOES NOT START AUTOMATICALLY

1. Check whether the power line is live.
2. Check if the fuse is defective.
3. For AC pumps, check whether the capacitor is in proper working order.
4. Check that the motor is in proper working order; have the winding checked by an electrician.
5. Check whether the pump has got stuck (motor shaft can be turned easily with a screwdriver, otherwise see 6.4). Attention: Carry out only after the mains plug has been disconnected! Risk of injury! Check whether the motor-protective circuit-breaker has been tripped; if so see point 6.2.

6.5 WATER DRIPS FROM CIRCULATION PUMP BETWEEN PUMP HOUSING AND MOTOR

1. During commissioning, it is possible for water to can escape in drops at intervals of approx. 2 minutes. After a few hours of operation, when the seal has run in, the dripping stops automatically.
2. If water is constantly leaking from this point, the mechanical seal is defective and must be replaced.

6.6 SILICA SAND IS FLUSHED OUT OF THE FILTER INTO THE BASIN

1. Incorrect grain size (too fine). Special silica sand granulation 0.4 - 0.8 mm required.
2. Filter base in filter container damaged - replace filter base.
3. 6-way valve damaged or dirty - replace/clean.

6.7 FILTER PRESSURE AT THE PRESSURE GAUGE DOES NOT DROP BACK TO THE OUTLET PRESSURE AFTER BACKWASHING, OR OUTLET PRESSURE IS TOO HIGH

1. Pressure gauge defective - replace.
2. Quartz sand hardened and/or clumped - filter sand must be replaced.
3. Suction or pressure line too small or valve closed.

6.8 WATER IS NOT CLEAR

1. Insufficient disinfection (chlorination), which causes an overload of the filter; check and adjust chlorine and pH value in respect of specified values.
2. Filter is too small.
3. Circulation time is too short.
4. If necessary, use flocculant for silica sand filters.
5. Insufficient filter backwashing processes cause short filter run times.

6.9 SWIMMING POOL LOSES WATER VIA THE FILTER SYSTEM

1. Gaskets in 6-way valve damaged - replace.
2. Feed pipe from swimming pool is leaking.

WHAT TO DO IF...?

Tips for troubleshooting in case of problems that may occur during setup:

Problem	Description of problem	Possible causes	Possible remedial measures
Filter systems / Pumps	Insufficient or no filter performance	Air intake via suction pipe	- Check connection pipe and seals on the suction side Teflon Tape may possibly be missing - Seal of the pre-filter cover is leaking - Pre-filter cover cracked
		Mechanical seal is defective	Pump must be returned for repair
		Excessive suction lift	Correct pump height or use a check valve
		Pre-filter or skimmer without water (level)	Fill water into pool or pre-filter
		Filter is clogged	Backwash in case of sand filter. Clean/change system or cartridge.
		Diameter of suction line too small	Change to piping system or use larger diameter
		Pump not properly mounted	Fix pump correctly
		Foreign particles in the pump	Clean pump and pump filter
		Pump impeller or shaft is defective	Pump must be returned for repair
		Pump does not start	
Foreign particles in the pump	Clean pump and pump filter		
Thermal protection relay has responded	Reset thermal circuit breaker and determine cause		
No voltage	Reset the fuse		
Motor is blocked	Pump must be returned for repair		
Engine noise but no filter performance		Foreign particles in the pump	Clean pump and pump filter
		Motor is blocked	Pump must be returned for repair
Pump leaking		Filter cover leaking	Clean or replace filter cover and sealing
		Mechanical seal is defective	Pump must be returned for repair
Sand in pool		Used filter sand has incorrect granulation	Observe manufacturer's instructions/ use only original filter sand
		Multi-way valve defective	Replace multiway valve
		Riser pipe/filter base defective	Pump must be returned for repair
Filter tank/ pipes leaking		Screw connections not properly tightened (too loose)	Retighten/retension screw connections
		No sealing	Seal with Teflon tape
		Mechanical damage	Replace defective parts.

WARRANTY

Please note the following in case you want to assert a warranty claim:

- We offer a 2-year warranty for our products, starting from the purchase of the product. During this period, we warrant that the products delivered by us are free from manufacturing and/or material defects.
- Our warranty obligation shall not extend to defects, errors or damage that are the result of improper or violent use by the customer or third parties who are not responsible. Furthermore, the warranty is excluded in case of force majeure.
- In case of transport of the defective product within the warranty period, we will bear the costs. Outside the warranty period, the customer has to bear the costs.
- In case of a free replacement delivery, this does not lead to an interruption of the period of limitation in accordance with §212 BGB (German Civil Code).
- Furthermore, we assume no guarantee for wearing parts, for cases of poor maintenance and for consequential damages due to the use of impermissible supplies.
- The same applies to non-compliance with operating or maintenance instructions, overuse/overstraining or other interventions in the delivered goods, in cases where modifications are made to the delivered goods, parts are replaced or consumables are used for these products that do not meet the original specifications.
- Customer claims for damages, e.g. for non-performance, culpa in contrahendo, violation of secondary contractual obligations, consequential damages caused by a defect, unlawful acts and other legal grounds are excluded. This does not apply to the liability for lack of a guaranteed property, intent or gross negligence. In particular, no damages are paid for water and chemicals that had to be drained due to a leakage in your pool.



To ensure a prompt, trouble-free and uncomplicated processing of your complaint, it is important that the registration form is completely filled out in block letters and submitted together with all required documents (proof of purchase or sales receipt/photos). A proof of purchase like a sales receipt is a mandatory prerequisite for all warranty claims. Without proof of purchase, it is unfortunately not possible for us to acknowledge/process a complaint. Relevant photos regarding your complaint will help us to evaluate the facts more quickly. This will save both you and us unnecessary costs and waiting times/delays.

By post to: Waterman Customer Service
Bahnhofstr. 68, 73240 Wendlingen/Germany

By fax to: + 49 (0) 7024/4048-667

By E-mail to: service@waterman-pool.com



You can download the registration form here:
<http://reklamation.waterman-pool.com>

I bought the product (model) _____ with article number _____

from (company) _____ at (Postcode/Town) _____ on _____ .

I want to submit the following complaint (Please include a precise description):

Place*

Date*

Signature*

***Required information/documents**

waterman

Registration of complaint for sand filter system

Waterman Customer Service
Bahnhofstr. 68
73240 Wendlingen/Germany
Tel.: + 49 (0) 7024/4048-666
Fax: + 49 7024/4048-667
E-mail: service@waterman-pool.com

It is imperative that you attach a proof of purchase* to your claim! (A proof of purchase like a sales receipt is a mandatory prerequisite for all warranty claims. Without proof of purchase, it is unfortunately not possible for us to acknowledge/process a complaint).

Please attach relevant photos* of the damage to your complaint! (Photos of defective item.) These allow us to better evaluate the facts. In addition, the complaint can be processed faster and unnecessary costs and waiting times are avoided for all involved.

Your contact data

Name*

Address*

Postcode/City*

Phone*

Mobile

Fax

E-mail*



The sand filter system alone cannot ensure and provide clear swimming pool water. The sand filter retains smallest dirt particles and removes them from the water circulation during backwashing.

An additional treatment of the water plus disinfection, e.g. based on chlorine or oxygen, is always required. For further information about water treatment, see here:

<http://www.planet-pool.de>

<http://www.summer-fun.info>



CUSTOMER SERVICE

Thank you for purchasing one of our products. Our products are subject to stringent final quality checks. Nevertheless it cannot be excluded that malfunctions or defects may occur. If, contrary to expectations, the purchased product should not function properly or should otherwise not be in good order, please contact our customer service directly.

As a matter of course, our customer service is available for you also after the warranty period.



**PLEASE DO
NOT RETURN TO
THE STORE!**

Questions? Problems? Missing parts?
Please contact our customer hotline if you need any help.

Waterman Customer Service
Bahnhofstr. 68, 73240 Wendlingen/Germany
Tel.: +49 (0) 7024/4048666
Fax: +49 (0) 7024/4048667
E-mail: service@waterman-pool.com
